

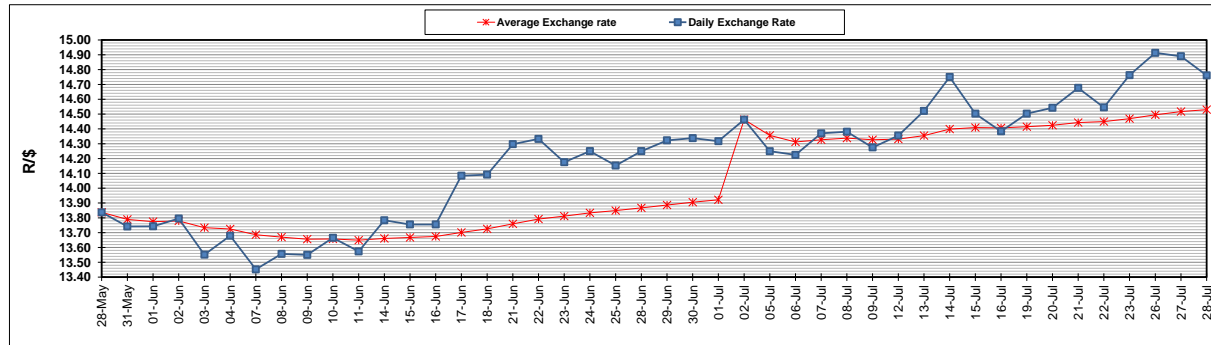
	PETROL 95 ULP	PETROL 93 ULP & LRP	DIESEL 0.05%	DIESEL 0.005%	ILL. PAR.
GAUTENG PUMP PRICE (SA c/l) AS FROM 07/07/2021	1,739.000	1,720.000	-	-	-
WHOLESALE PRICE (SA c/l) AS FROM 07/07/2021	-	-	1,508.620	1,512.020	913.488
SINGLE NATIONAL MAXIMUM RETAIL PRICE	-	-	-	-	1,150.000
BASIC FUEL PRICE - 28/07/2021 (SA c/l)	848.198	834.420	779.036	782.192	760.513
PRESS RELEASE CONTRIBUTION TO BFP 07/07/2021 - 28/07/2021 (SA c/l)	743.170	734.170	721.630	725.030	700.128
UNIT OVER/(UNDER) RECOVERY - 28/07/2021 (SA c/l)	(105.028)	(100.250)	(57.406)	(57.162)	(60.385)
AVERAGE BASIC FUEL PRICE 02/07/2021 - 28/07/2021	820.457	806.825	762.590	765.404	742.417
AVERAGE UNIT OVER/(UNDER) RECOVERY 02/07/2021 - 28/07/2021	(81.393)	(77.234)	(47.592)	(46.847)	(47.974)

### ANALYSIS MOVEMENT OF AVERAGE OVER/(UNDER) RECOVERY

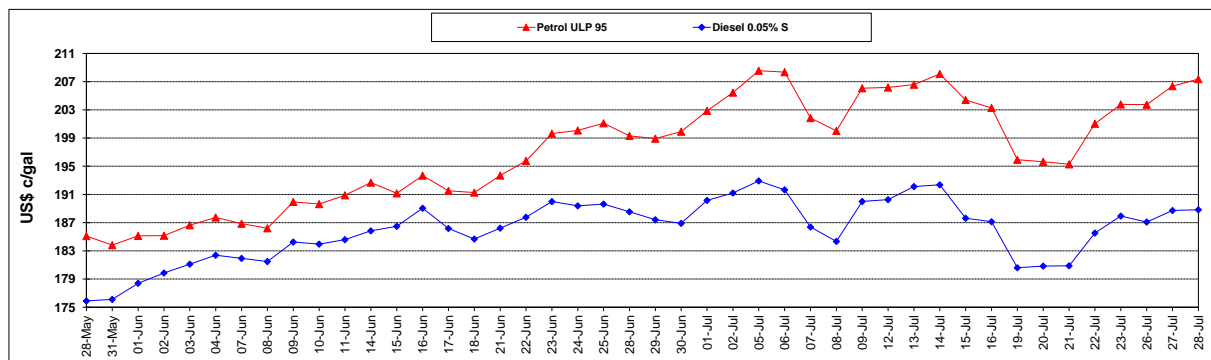
	PETROL 95	PETROL 93	DIESEL 0.05%	DIESEL 0.005%	ILL. PAR.
- MOVEMENT IN INTERNATIONAL PRODUCT PRICES	(47.060)	(43.473)	(15.682)	(14.820)	(16.907)
- MOVEMENT IN EXCHANGE RATE	(34.332)	(33.761)	(31.910)	(32.028)	(31.066)
AVERAGE UNIT OVER/(UNDER) RECOVERY 02/07/2021 - 28/07/2021	(81.393)	(77.234)	(47.592)	(46.847)	(47.974)

### R/\$ EXCHANGE RATE - (R/\$14.7613- 28/07/2021)

#### EXCHANGE RATE USED IN BASIC FUEL PRICE



#### INTERNATIONAL PRODUCT PRICES OF BASKET USED IN BASIC FUEL PRICE



#### BASIC FUEL PRICE IN SA CENTS PER LITRE

